

# Neue Grafik New Graphic Design Graphisme actuel

International Journal for Graphic and  
Visual Culture  
It is published in German, English and  
French in the Spring

International Review of graphic  
design and visual culture  
Issued in German, English and French  
language

Revue internationale pour le graphisme  
et la culture visuelle  
Parution en langues allemande,  
anglaise et française

## 2

Rolf P. Lohr, Zürich

Georg Hart, Paris

Andreas Zwick

Hans Neuburg, Zürich

Paul Peter, Basel

Reinhold F. Topp, Zürich

Ulrich G. Gysin, Zürich

Schweizer Kunsthaus

August 2008

Index

Editorial  
Editorial für Kunstausstellungen  
1988-1989

Editorial für Kunstausstellungen  
1988-1989

Editorial für Kunstausstellungen  
1988-1989

Editorial für Kunstausstellungen  
1988-1989

Editorial für Kunstausstellungen  
1988-1989

Editorial für Kunstausstellungen  
1988-1989

Editorial für Kunstausstellungen  
1988-1989

Editorial für Kunstausstellungen  
1988-1989

Editorial für Kunstausstellungen  
1988-1989

Editorial für Kunstausstellungen  
1988-1989

Editorial für Kunstausstellungen  
1988-1989

Editorial für Kunstausstellungen  
1988-1989

Editorial für Kunstausstellungen  
1988-1989

Editorial für Kunstausstellungen  
1988-1989

Editorial für Kunstausstellungen  
1988-1989

Editorial für Kunstausstellungen  
1988-1989

Editorial für Kunstausstellungen  
1988-1989

Editorial für Kunstausstellungen  
1988-1989

Editorial für Kunstausstellungen  
1988-1989

Editorial für Kunstausstellungen  
1988-1989

Editorial für Kunstausstellungen  
1988-1989

Editorial für Kunstausstellungen  
1988-1989

Editorial für Kunstausstellungen  
1988-1989

Editorial für Kunstausstellungen  
1988-1989

Editorial für Kunstausstellungen  
1988-1989

Editorial für Kunstausstellungen  
1988-1989

Editorial für Kunstausstellungen  
1988-1989

Editorial für Kunstausstellungen  
1988-1989

Editorial für Kunstausstellungen  
1988-1989

Editorial für Kunstausstellungen  
1988-1989

Editorial für Kunstausstellungen  
1988-1989

Editorial für Kunstausstellungen  
1988-1989

Editorial für Kunstausstellungen  
1988-1989

Editorial für Kunstausstellungen  
1988-1989

Editorial für Kunstausstellungen  
1988-1989

Editorial für Kunstausstellungen  
1988-1989

Editorial für Kunstausstellungen  
1988-1989

Editorial für Kunstausstellungen  
1988-1989

Editorial für Kunstausstellungen  
1988-1989

## The new online home for diversity recruitment.

[nytimes.com/diversityandinclusion](http://nytimes.com/diversityandinclusion)

## Fare Warning. Fares to Germany will never be this low again.

### 458 Round trip

Dallas Ft. Worth to Frankfurt, Dusseldorf, Hamburg and Stuttgart

### 488 Round trip

Dallas Ft. Worth to Munich, Nuremberg and Berlin

Experience Lufthansa's great service to  
an incredible saving with Lufthansa's  
Special Saver Fares™. All you have to do is  
purchase before March 31, 1998.

The fare from Lufthansa is in effect  
through April 30, 1998. Fares are  
not for weekends.

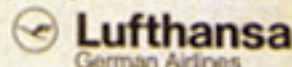
Take advantage of this offer in April,  
May, June, July, August, September and  
October. Similar low fares at night-  
weekend fares from May 1-31 and Sept. 15-Oct. 31, 1998.

You must make your reservation and purchase  
your ticket at least 30 days before departure, but  
not later than March 31, 1998. Stay a minimum of  
seven days, a maximum of 21.

Restrictions do apply, seats are limited and tickets  
are non-refundable. Fares are subject to change  
without notice.

For more information about Lufthansa's Special  
Saver Fares, see your Travel Agent or call  
Lufthansa at 1-800-645-3600 today.

People expect the world of us.



## Come see what we're doing at our Community Stores and Galleries.

**Boston, MA**  
111 Broadway  
New York, NY 10002  
Phone: 212-260-2267

**West Village, NYC**  
111 West 11th St  
New York, NY 10011  
Phone: 212-260-2267

**Lower East Side, NYC**  
111 E. Houston St  
New York, NY 10002  
Phone: 212-260-2267

**Boston, MA**  
111 Spring St  
New York, NY 10012  
Phone: 212-260-2267

**Williamsburg, NYC**  
111 Broadway  
New York, NY 10002  
Phone: 212-260-2267

**West Hollywood, LA**  
111 N. Robertson Blvd  
Los Angeles, CA 90048  
Phone: 310-274-5292

**Los Angeles, CA**  
111 N. Robertson Blvd  
Los Angeles, CA 90048  
Phone: 310-274-5292

**Los Angeles, CA**  
111 N. Robertson Blvd  
Los Angeles, CA 90048  
Phone: 310-274-5292

**Los Feliz, LA**  
111 N. Hollywood Blvd  
Los Angeles, CA 90027  
Phone: 310-274-5292

**Portland, OR**  
111 N. 1st St  
Portland, OR 97201  
Phone: 503-227-2700

**East West Road, NY**  
111 East 11th St  
New York, NY 10002  
Phone: 212-260-2267

**Westchester, NY**  
111 N. Broadway  
New York, NY 10012  
Phone: 212-260-2267

**St. Louis, MO**  
111 N. 1st St  
St. Louis, MO 63101  
Phone: 314-241-2267

**San Francisco, CA**  
111 N. California St  
San Francisco, CA 94104  
Phone: 415-398-2267

**San Francisco, CA**  
111 N. California St  
San Francisco, CA 94104  
Phone: 415-398-2267

**San Francisco, CA**  
111 N. California St  
San Francisco, CA 94104  
Phone: 415-398-2267

**Frankfurt, DE**  
111 N. Broadway  
New York, NY 10002  
Phone: 212-260-2267

**Berlin, DE**  
111 N. Broadway  
New York, NY 10002  
Phone: 212-260-2267

**London, UK**  
111 N. Broadway  
New York, NY 10002  
Phone: 212-260-2267

**London, UK**  
111 N. Broadway  
New York, NY 10002  
Phone: 212-260-2267

## American Apparel™

Made in Downtown LA  
Resisting Fire • Made Free Clothes

To stay on top of new store openings visit  
[www.americanapparel.com](http://www.americanapparel.com)

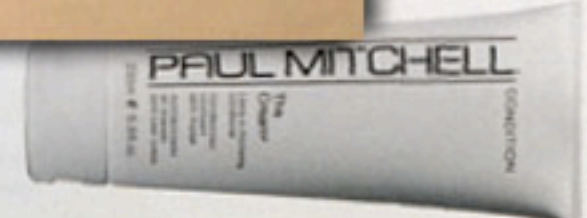
American Apparel is a vertically  
integrated manufacturer and  
retailer of soft garments for men,  
women, infants, toddlers and  
kids. Producing everything  
under one roof in Downtown  
Los Angeles, we are committed  
to making clothing of the  
highest quality while promoting  
industry standards of social  
responsibility in the workplace.

All of our 2008 employees  
are men, women and children who  
are soft, fun, and have access  
to their parents' health care.  
In our exploration of sustainable  
textile fibers we use only  
cotton. We are the best  
effective fiber using technology  
and innovation to advance  
sustainable.

For more information about our  
products, visit our website  
or call our customer service  
department. Please visit our  
web site.

## Be Brilliant

Be penetrating. Ask your hairdresser for  
new Paul Mitchell The Cream, now with  
our exclusive Activated Moisturizing Blend.  
Smooth and control, condition and protect.  
Part of a complete collection of  
enhanced haircare products from  
Paul Mitchell...The true professional.



800.321.JPMS [www.paulmitchell.com](http://www.paulmitchell.com)